

# OPTIONAL TOURS

Tour	Theme	Date	Time	Program	Rate (KRW)
<b>Half Day Tour</b>	Authentic Korea	30 October, 2019	13:00-17:00	<ul style="list-style-type: none"> <li>Gyeongbokgung Palace</li> <li>Cheong Wa Dae (Blue House)</li> <li>Gwanghwamun Square</li> </ul>	60,000
	Royal Palace Tour			<ul style="list-style-type: none"> <li>Jongmyo Shrine</li> <li>Changdeokgung Palace</li> </ul>	60,000
	Inner Peace			<ul style="list-style-type: none"> <li>Bongeunsa Temple</li> </ul>	65,000
	Seoul Sky			<ul style="list-style-type: none"> <li>Lotte World Tower</li> <li>Lotte World Shopping Mall</li> </ul>	100,000
	Modern Seoul			<ul style="list-style-type: none"> <li>N Seoul Tower</li> <li>Dongdaemun Market &amp; DDP (Dongdaemun Design Plaza)</li> </ul>	70,000
<b>Night Tour</b>	Traditional Market Tour	27 October, 2019 28 October, 2019 30 October, 2019 01 October, 2019 02 October, 2019	19:00-22:30	<ul style="list-style-type: none"> <li>Gwangjang Market</li> <li>Dongdaemun Market &amp; DDP (Dongdaemun Design Plaza)</li> </ul>	60,000
	Seoul Night View	27 October, 2019 30 October, 2019 01 October, 2019 02 October, 2019		<ul style="list-style-type: none"> <li>Namsan Hanok Village</li> <li>N Seoul Tower</li> </ul>	70,000
	Han-River Cruise	27 October, 2019 28 October, 2019 30 October, 2019 01 October, 2019 02 October, 2019	20:00-22:00	<ul style="list-style-type: none"> <li>Hangang River Ferry Cruise</li> </ul>	80,000
	Han-River Dinner Cruise	27 October, 2019 28 October, 2019 30 October, 2019 01 October, 2019 02 October, 2019	18:00-22:00	<ul style="list-style-type: none"> <li>Hangang River Ferry Cruise (Dinner Cruise)</li> </ul>	160,000
	Moonlight Palace	27 October, 2019 30 October, 2019 01 October, 2019 02 October, 2019	19:00-22:00	<ul style="list-style-type: none"> <li>Deoksugung Palace (Moonlight Tour)</li> <li>Gwanghwamun Square</li> </ul>	60,000
<b>Full Day Tour</b>	Korean Cultural Insight	27 October, 2019 30 October, 2019 02 October, 2019	09:00-17:00	<ul style="list-style-type: none"> <li>Gyeongbokgung Palace</li> <li>National Palace Museum of Korea</li> <li>Gwanghwamun Square</li> <li>Cheongyecheon Stream</li> <li>Namsan Hanok Village</li> </ul>	80,000
	Taste of Korea	27 October, 2019 30 October, 2019 02 October, 2019		<ul style="list-style-type: none"> <li>Museum Kimchikan (Making Kimchi)</li> <li>Insadong Antique Street</li> <li>Gwangjang Market</li> </ul>	120,000
	ICT Technology in Korea	28 October, 2019 30 October, 2019 02 October, 2019		<ul style="list-style-type: none"> <li>SK T.um</li> <li>Samsung D'light</li> <li>VR Station</li> </ul>	180,000
	IT & Traditional Culture Tour	28 October, 2019 30 October, 2019 02 October, 2019		<ul style="list-style-type: none"> <li>Samsung Innovation Museum</li> <li>Korea Folk Village</li> </ul>	120,000
	DMZ Tour	27 October, 2019 30 October, 2019 02 October, 2019	10:00-18:00	<ul style="list-style-type: none"> <li>Imjingak Park</li> <li>The 3<sup>rd</sup> Tunnel</li> <li>Dora Observatory</li> <li>Dorasan Station</li> </ul>	80,000

## [Half Day Tour1 Authentic Korea]

Date	Time	Itinerary
30 October, 2019	13:00-17:00	Gyeongbokgung Palace→Cheong Wa Dae (Blue House) →Gwanghwamun Square

### [Gyeongbokgung Palace]

Gyeongbokgung Palace is the most beautiful and significant out of five palaces of Seoul, Republic of Korea. Remarkably, the most representative edifices of the Joseon Dynasty, 'Gyeonghoe-ru' and 'Hyangwonjeong(Pond)', have remained relatively intact well. Moreover, you can see the changing of the Korea royal palace guards ceremony who has the essential duty of protecting the king by guarding the main entrance gates of Gyeongbokgung Place - Gwanghwamun.



### [Cheong Wa Dae (Blue House)]

The signature of the Presidential residence, Cheong Wa Dae (Blue House) is its blue tiles. The traditional Korean buildings of Cheong Wa Dae are comprised of the Main Office, Yeongbingwan (Guest House), Chunchugwan, Nokjiwon, the Mugunghwa Valley, and the other seven (more). Notably, the blue tiles and the flat roof of Cheong Wa Dae is harmonized beautifully with Bugak Mountain.



### [Gwanghwamun Square]

Gwanghwamun Square is a famous public area located in the heart of central Seoul that features museums, statues, restaurants, and beautiful surrounding views.

The redesigned square, which is bordered by Sejong-ro, reopened to the public on August 1, 2009. Moreover, you can see the beautiful scenery of central Seoul through this pedestrian-only square where was designed in harmony of human, nature, and modern city.



## [Half Day Tour2 Royal Palace Tour]

Date	Time	Itinerary
30 October, 2019	13:00-17:00	Jongmyo Shrine→Changdeokgung Palace

### [Jongmyo Shrine]

Jongmyo Shrine was a primary place of worship for kings throughout the Joseon Dynasty. The memorial service, called Jongmyo Jaerye, is said to be the oldest complete ceremony in the world and was carried out in obedience to the king's order. The ceremony was designated as a UNESCO World Cultural Heritage site on December 9, 1995, for its well-preserved ancient customs, such as memorial services and traditional music, which is National Intangible Cultural Asset No.56.



## [Changdeokgung Palace]

Changdeokgung Palace was the second royal villa built following the construction of Gyeongbokgung Palace in 1405. It was the main palace for many kings of the Joseon Dynasty and is the most well-preserved of the five remaining royal Joseon palaces. Known as a place of rest for the kings, the rear garden boasts a gigantic tree that is over 300 years old, a small pond and a pavilion.



## [Half Day Tour3 Inner Peace]

Date	Time	Itinerary
30 October, 2019	13:00-17:00	Bongeunsa Temple (Temple Stay)

## [Bongeunsa Temple]

Bongeunsa was constructed in the 10<sup>th</sup> year of Silla King Weongseong's reign(794) and this temple is currently surrounded by modern buildings and parks in the northern COEX. In 1498, Queen Jeonghyeon refurbished Gyeongseongsa and renamed it as Bongeunsa. Originally located in the near Royal Tomb of King Seongjong, the temple was transferred to its current location during Joseon King Myeongjong's reign. This is a program which you can see and have various experiences in the traditional and beautiful temple located in modern central Seoul.



## [Half Day Tour4 Seoul Sky]

Date	Time	Itinerary
30 October, 2019	13:00-17:00	Lotte World Tower→Lotte World Shopping Mall

## [Lotte World Tower (Seoul Sky)]

Seoul Sky, the nation's tallest and the world's fifth tallest building, is located on floors 117-123 of Lotte World Tower. The observatory offers a panoramic view of the entire Seoul, both day and night. In addition to the outstanding view, you can enjoy puddings or coffee from the cafe while sitting in the lounge or on the sky terrace.

The observation deck has two-story-high glass windows for an uninterrupted view. The Sky Deck, located at 478m, hold the Guinness World Record as the highest glass-floored observatory in the world.



## [Lotte World Shopping Mall]

The Lotte World Mall is a global fashion hub and the place you can enjoy Korea's most famous duty-free store, 'Lotte Duty-Free.' This includes the department store, restaurants, the luxurious shopping mall called Avenuel, aquarium, Lotte world, a spectacular classical music hall, and Asia's largest multiplex.



## [Half Day Tours Modern Seoul]

Date	Time	Itinerary
30 October, 2019	13:00-17:00	N Seoul Tower→Dongdaemoun Market & DDP (Dongdaemun design Plaza)

### [N Seoul Tower]

N Seoul Tower, a complex culture space in Seoul, is where the clouds seem to meet with Namsan Mountain. In the first place, it was established as a broadcast tower to send out TV and radio signals in 1969 and as of now, it has become one of the famous landmarks of Seoul. It shows (or gives) you the harmony of Namsan's nature, the 21st-century state of the art, resting with leisure, and various cultures. Besides, you can see the 360° panoramic view of the entire city of Seoul at a glance.



### [Dongdaemun Market & DDP]

Dongdaemun Market is a large commercial district that takes in traditional markets and shopping centers. This market covers the entire area around Dongdaemun, one of leading landmark in Korea. All kinds of products can be found here, including silk and fabric, clothes, shoes and accessories, electronics, leather goods, sporting goods, office supplies, pet products and toys. Although Dongdaemun Market is traditionally famous for its night market, this popular shopping district attracts many shoppers and tourists all day long.



Dongdaemun Design Plaza (DDP) has a meaning of 'Dream, Design, and Play'. It holds various exhibitions, fashion shows, forums, conferences, and other domestic and international events. DDP is a hub for art and design, technology, the landscaped park that serves as a much-needed green oasis, plus the public plaza of Seoul.



## [Night Tour1 Traditional Market Tour]

Date	Time	Itinerary
27 October, 2019 28 October, 2019 30 October, 2019 01 November, 2019 02 November, 2019	19:00-22:30	Gwangjang Market→Dongdaemun Market & DDP (Dongdaedun Design Plaza)

### [Gwangjang Market]

Gwangjang Market has been over 100 years of its history and is the first permanent market in Korea. This market continues to thrive as a popular tourist destination today. The origin of the market can be traced back to the establishment of the Gwangjang Corporation in 1905, which was created to reclaim Korean sovereignty during the period of Japanese occupation. The market is famous for all different kinds of textiles that are filled with silk, satin, and linen bed-sheet stores in Seoul. Today, the vintage clothing arcade in the market has become a top-rated attraction among young people and wholesalers searching for unique vintage fashion.



### [Dongdaemun Market & DDP]

Dongdaemun Market is a large commercial district that takes in traditional markets and shopping centers. This market covers the entire area around Dongdaemun, one of leading landmark in Korea. It is also known as Korea's largest wholesale and retail shopping district featuring 26 shopping malls, 30,000 speciality shops, and 50,000 manufacturers. All kinds of products can be found here, including silk and fabric, clothes, shoes and accessories, electronics, leather goods, sporting goods, office supplies, pet products and toys. As a famous late-night market where many tourists love to visit, you can see the amazing, exuberant night scene in this heart of Seoul.



Dongdaemun Design Plaza (DDP) has a meaning of 'Dream, Design, and Play'. It holds various exhibitions, fashion shows, forums, conferences, and other domestic and international events. DDP is a hub for art and design, technology, the landscaped park that serves as a much-needed green oasis, plus the public plaza of Seoul.



### [Night Tour2 Seoul Night View]

Date	Time	Itinerary
27 October, 2019 30 October, 2019 01 November, 2019 02 November, 2019	19:00-22:30	Namsan Hanok Village→N Seoul Tower

### [Namsan Hanok Village]

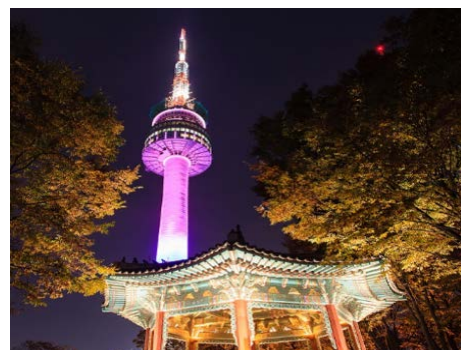
Namsangol Hanok Village opened in 1998 on the northern Namsan (Mountain) in the center of the capital. This village has five restored traditional Korean houses, a pavilion, traditional garden, performance arts stage and a time capsule plaza, making it a perfect spot for both locals and tourists to take a leisure walk.



Upon entering from the front gate, you are able to get a taste of the traditional life while escaping from the bustling city life of modern times. The traditional garden with its pavilion and the traditional houses create a peaceful ambiance before the forested Namsan (Mountain).

### [N Seoul Tower]

N Seoul Tower, a complex culture space in Seoul, is where the clouds seem to meet with Namsan (Mountain). In the first place, it was established as a broadcast tower to send out TV and radio signals in 1969 and as of now, it has become one of the famous landmarks of Seoul. It shows (gives) you the harmony of Namsan's nature, the 21st-century state of the art, resting with leisure, and various cultures. Besides, you can see the 360° panoramic view of the entire city of Seoul at a glance. It is one of the attractive places experiencing the beautiful night view of Seoul.



## [Night Tour3 Han-River Cruise]

Date	Time	Itinerary
27 October, 2019 28 October, 2019 30 October, 2019 01 November, 2019 02 November, 2019	20:00-22:00	Hangang River→Ferry Cruise

### [Hangang River Ferry Cruise]

The Hangang River Ferry Cruise is one of the best ways to enjoy the Hangang River. Taking a cruise is a great way to enjoy the fresh air and get away from stressful things. Hangang view on the cruise is guaranteed to create unforgettable memories for families, lovers and friends. It aims to promote and familiarize the Hangang River to foreign tourists as a world famous attraction. Both foreigners and domestic residents can take a break from the busy urban atmosphere and enjoy a relaxing time while on the cruise.



## [Night Tour4 Han-River Dinner Cruise]

Dinner Includes

Date	Time	Itinerary
27 October, 2019 28 October, 2019 30 October, 2019 01 November, 2019 02 November, 2019	18:00-22:00	Hangang River Ferry Cruise (Dinner Cruise)

### [Hangang River Ferry Cruise (Dinner Cruise)]

The Hangang River Ferry Cruise is one of the best ways to enjoy the Hangang River. Taking a cruise is a great way to enjoy the fresh air and get away from stressful things. Also, you can have a nice dinner while taking a wonderful night view of Hangang River on this cruise by going through the iconic attraction places in Seoul. You can take a break from the busy urban atmosphere and enjoy a relaxing time while on the cruise.



## [Night Tour5 Moonlight Palace]

Date	Time	Itinerary
27 October, 2019 30 October, 2019 01 November, 2019 02 November, 2019	19:00-22:00	Deoksugung Palace (Moonlight Tour) →Gwanghwamun Square

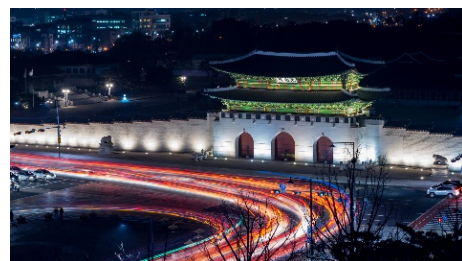
### [Deoksugung Palace]

Located at the corner of Seoul's busiest downtown intersection, Deoksugung Palace is famous for its elegant stone-wall road. It is also the only palace that sits alongside a series of western style buildings that add to the uniqueness of the surrounding scenery. Over the decades, the palace alternated between being an official palace and a temporary residence. Upon entering Deoksugung Palace through Daehanmun Gate, you will cross the wide bridge of Geumcheon Stream. The king's carriage would pass over this bridge during ancient times. The legal building Junghwajeon Hall is very stately, revealing its long history.



### [Gwanghwamun Square]

Gwanghwamun Square is a famous public area located in the heart of central Seoul that features museums, statues, restaurants, and beautiful surrounding views. The redesigned square, which is bordered by Sejong-ro, reopened to the public on August 1, 2009. Moreover, you can see the beautiful scenery of central Seoul through this pedestrian-only square where was designed in harmony of human, nature, and modern city.



## [Full Day Tour1 Korean Cultural Insight]

Lunch Includes

Date	Time	Itinerary
27 October, 2019 30 October, 2019 02 November, 2019	09:00-17:00	Gyeongbokgung Palace→National Palace Museum of Korea→Gwanghwamun Square→Cheongyecheon Stream→Namsan Hanok Village

### [Gyeongbokgung Palace]

Gyeongbokgung Palace is the most beautiful and significant out of five palaces of Seoul, Republic of Korea. Remarkably, the most representative edifices of the Joseon Dynasty, 'Gyeonghoe-ru' and 'Hyangwonjeong(Pond)', have remained relatively intact well. 'Woldae' and 'Geunjeongjeon' (The Royal Audience Chamber) are also the best places you can explore the history of the Joseon Dynasty. Moreover, you can see the changing of the Korea royal palace guards ceremony who has the essential duty of protecting the king by guarding the main entrance gates of Gyeongbokgung Place - Gwanghwamun.



## [National Palace Museum of Korea]

The National Palace Museum of Korea, located on the ground of Gyeongbokgung Palace, promotes and preserves the culture of the Joseon royal and Korean imperial court by collecting, conserving, researching and exhibiting the related relics and artefacts. You can see the permanent exhibitions divided by diverse subjects and special exhibitions. These are based on in-depth stories related to the Joseon royal and Korean imperial court with multifarious display methods.



## [Gwanghwamun Square & Cheonggyecheon Stream]

Gwanghwamun Square is divided into six sections. At its center stands a statue of King Sejong the Great, the fourth and most respected king of the Joseon Dynasty and creator of Hangeul (Korea's alphabet); and a statue of Admiral Yi Sunshin, a naval commander, noted for his victories against the Japanese navy during the Japanese invasions of Korea (1592-1598), a hero among Koreans. It also includes the famous 12.23 Fountain, a sculpture of Haechi (the symbol of Seoul), a flower carpet, and Yeoksamulgil (or the "Waterway of History") on either side of the square. Cheonggyecheon is an 11 km long modern stream that runs through downtown Seoul. Created as part of an urban renewal project, Cheonggyecheon is a restoration of the stream that was once there before during the Joseon Dynasty (1392-1910). The stream was covered with an elevated highway after the Korean War (1950-1953), as part of the country's post-war economic development. Then in 2003, the elevated highway was removed to restore the stream to its present form today. The stream starts from Cheonggye Plaza, a popular cultural arts venue, and passes under a total of 22 bridges before flowing into the Hangang (River), with many attractions along its length.



## [Namsan Hanok Village]

Namsangol Hanok Village opened in 1998 on the northern Namsan in the center of the capital. This village has five restored traditional Korean houses, a pavilion, traditional garden, performance arts stage and a time capsule plaza, making it a perfect spot for both locals and tourists to take a leisure walk. Upon entering from the front gate, you are able to get a taste of the traditional life while escaping from the bustling city life of modern times. The traditional garden with its pavilion and the traditional houses create a peaceful ambiance before the forested Namsan (Mountain).





# [Full Day Tour2 Taste of Korea] Lunch Includes

Date	Time	Itinerary
27 October, 2019 30 October, 2019 02 November, 2019	09:00-17:00	Museum Kimchikan (Making Kimchi)→Insadong Antique Street→Gwangjang Market

## [Museum Kimchikan]

Museum Kimchikan is a unique museum represents kimchi and kimjang. Kimjang is the process of making kimchi which was listed as UNESCO Intangible Cultural Heritage of Humanity. CNN also selected this museum as one of the world’s top 11 food museums in March, 2015. You can learn the history of kimchi and get a taste of the different types of kimchi.



## [Insadong Antique Street]

Insadong Street is one of the most remarkable attractions in Seoul and represents the focal point of Korean traditional culture and crafts. The street is located in the heart of the city and is an excellent place to look around beautiful antique and traditional shops displaying some of craft works lining in the street. There are about 100 galleries in this area, and you can see different types of traditional Korean fine art from paintings to sculptures. This winding alleyways can be quite entertaining place for taking pleasure in eye shopping. The shops in Insa-dong specialize in a wide variety of traditional goods that can be only purchased or appreciated in Korea: hanbok (clothing), hanji (paper), teas, pottery, and folk crafts.



## [Gwangjang Market]

Gwangjang Market has been over 100 years of its history and is the first permanent market in Korea. This market continues to thrive as a popular tourist destination today. The origin of the market can be traced back to the establishment of the Gwangjang Corporation in 1905, which was created to reclaim Korean sovereignty during the period of Japanese occupation. The market is famous for all different kinds of textiles that are filled with silk, satin, and linen bed-sheet stores in Seoul. Today, the vintage clothing arcade in the market has become a top-rated attraction among young people and wholesalers searching for unique vintage fashion.



# [Full Day Tour3 ICT Technology in Korea]

Lunch Includes

Date	Time	Itinerary
28 October, 2019 30 October, 2019 02 November, 2019	09:00-17:00	SK T.um→Samsung D'light→VR Station

## [SK T.um]

T.um is a venue to experience the future of mobile communications. The name T.um comes from the word for “sprout” in Korean and refers to this innovative space from SK Telecom, where the future sprouts with the company’s advanced technology. It takes you on the journey to that future. You are offered a chance to participate (experience) it actively and enjoy the cutting-edge IT environment with an interactive 4D experience. The venue pleasures virtually experiencing the ubiquitous world of the future.



## [Samsung D'light]

Located within the Samsung Electronics building in Seocho-dong, Seoul, ‘Samsung D’light’ is a global exhibition space that showcases the latest product lineup by Samsung Electronics. The name d’light combines the words ‘digital’ and ‘light’ to correlate with the company’s vision of being ‘a guiding light to the digital world’ and sharing the excitement and delight of digital technology through interaction with visitors.



## [VR Station]

Lots of Virtual Reality activities are waiting for you. You can enjoy the VR activities regardless of outdoor the weather. Located in Gangnam, VR STATION is an urban VR Themepark on a massive scale which is about 3967m<sup>2</sup>, and it is a complex cultural space that has around 20 kinds of main VR Attractions and various media contents.



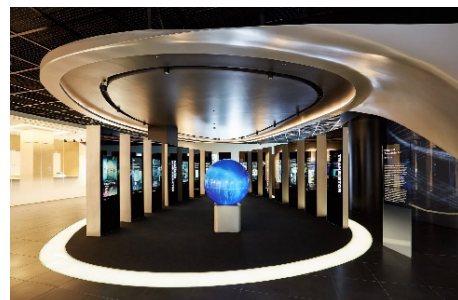
## [Full Day Tour4 IT & Traditional Culture Tour]

Lunch Includes

Date	Time	Itinerary
28 October, 2019 30 October, 2019 02 November, 2019	09:00-17:00	Samsung Innovation Museum→Korea Folk Village

### [Samsung Innovation Museum]

Samsung Innovation Museum is an electronic industrial museum run by Samsung, a major global company based in Korea. The museum mainly consists of three sections. Visitors can learn about the history of Korea's electronic industry, and the achievements this company has contributed in the IT industry with major parts of the technologies such as semiconductor, display and mobile technologies.) The museum also runs an education facility called Children's Display Research Institute.



### [Korea Folk Village]

Korean Folk Village introduces traditional culture from the late Joseon period to let local and foreign visitors know about cultural classes experience, shaman faith, seasonal customs and others. Also, the village shows various places with unique features; farming village, private house, official districts, Confucian academy, Seodang (village school for kids), a street in realistic descriptions, a nobleman's house and traditional workshop. The special events and performances such as Nongak (farmer's music), martial art on horseback, traditional wedding ceremony vary with the seasons.



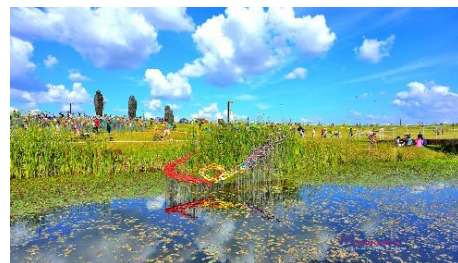
## [Full Day Tour5 DMZ Tour]

Lunch Includes

Date	Time	Itinerary
27 October, 2019 30 October, 2019 02 November, 2019	10:00-18:00	Imjingak Park→The 3 <sup>rd</sup> Tunnel→Dora Observatory→Dorasan Station

### [Imjingak Park]

Away from the capital of South Korea 54 kilometres, Imjingak is the last village you could visit before getting into the DMZ(Demilitarized zone). The park, located 7km away from the Military Demarcation Line, is now at the forefront of tourism related to the Korean Conflict. It was built in 1972 with the hope that someday unification would be possible. Three-storied Imjingak is surrounded by several Monuments, Unification Park and North Korea Center. Outside Imjingak, there are 12 kinds of tanks and crafts on display that were used during the Korean Conflict.



## [The 3rd Tunnel]

South Korea discovered the 3rd tunnel located 52km from Seoul in 1978. It spans over 1,635m in length, 2m in width, and 2m in height. It is estimated that approximately 30,000 soldiers could move through the tunnel per hour. The scale is similar to the 2nd tunnel, but it was thought to be more threatening as an invasion tool than the 1st and 2nd Tunnels. Located only 4km away from Imjingak toward the southwest and 3.5km from the Tongilchon area, it is accessible by car in approximately 45 min from Seoul.



## [Dorasan Observatory]

Dorasan Observatory has located nearby the 3rd Tunnel. From this observation platform, North Korean military personnel are visible, and so are the highlights of Gaeseong and the Geumgangsans Diamond Mountains.



## [Dorasan Station]

Dorasan Station, a railway station on the Gyeongui Line, is the northernmost stop on South Korea's railway line. You can get on a train bound for Dorasan Station after presenting your identification at Imjingang Station. Since it is the northernmost part of South Korea, Dorasan Station will also play the role of customs and immigration for visitors entering South Korea through the station when the Gyeongui Line Railroad connection is completed.

